

Choose the right shape for a more beautiful you!

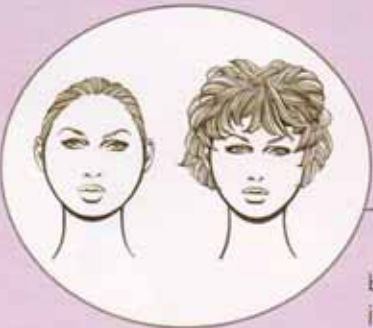
In choosing the correct style, the first thing you must consider is facial shape. There are a total of seven facial shapes:

Are you?



Oval

The ideal facial shape is oval. It has no dominant area and looks very harmonious because the face is evenly balanced. Consequently, oval faces look good with almost any hairstyle.



Round

The Round Shaped Face is characterized by a wide hairline and fullness below the cheekbones. The contour moves from each cheekbone through the jawbone and chin. The client may be overweight and the neck may appear short.

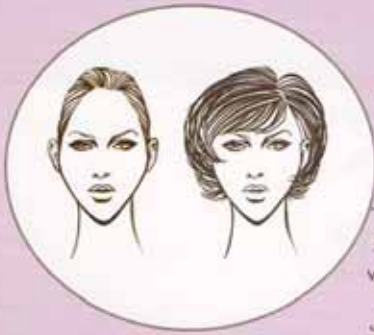
Solution: Combing height in the top and crown sections, when possible, tends to diminish some of the roundness. Long, wispy side areas help to make the cheeks look narrow. Combing the hair close to the head on the side and nape sections also helps.



Square

The Square Shaped face is characterized by a wide hairline and jaw.

Solution: Combing the hair off the forehead and adding height at the top creates an oval illusion for the face. Curly texture and wisps of hair around the sides of the face break the wide straight lines common to the square face.



Diamond

The Diamond Shaped face is characterized by a narrow chin and forehead with wide cheekbones.

Solution: To achieve an attractive oval look, fullness or width is needed in the forehead hairline and lower cheekbone areas of the face. Fullness is not needed in the area of the upper cheekbones, so the hair should be styled close to the head in this area. The hair should be styled with a fringe or bang to disguise the narrow forehead and with fullness around the jawbone to complete the oval illusion.



Heart

The Heart Shaped face is characterized by a large, wide forehead (often with a widow's peak), and a narrow chin.

Solution: To remedy the heart shape face, some hair is brought onto the forehead to reduce the area across it. A pageboy-type style is good for the lower sides of the face. With such a style, the hair is close to the head at the eyes, where narrowness is needed, but the hair is slightly full toward the face around the jaw, and below and in front of the earlobes, where width is needed.



Pear

The Pear Shaped face is characterized by a small or narrow forehead and a rather large jawbone.

Solution: Combing the hair to add width from eye level through the crown of the head is helpful. Hair in the side and nape sections should be set and combed in a pattern close to the head.



Oblong

The Oblong Shaped face is characterized by a very long and narrow bone structure. The client who has an oblong facial shape often has a long, thin neck.

Solution: A fringe or half-bang across the forehead should be accomplished by soft waves or curls in the crown and nape areas. This flatters the face and neck by creating the oval illusion.